

Marysville Joint Unified School District

Information on School Bond
Measure, November 2018

Topics

- MJUSD
- Facilities
- Bonds
- MJUSD Process
- Projects
- Ballot Measure
- Questions

MJUSD at a Glance

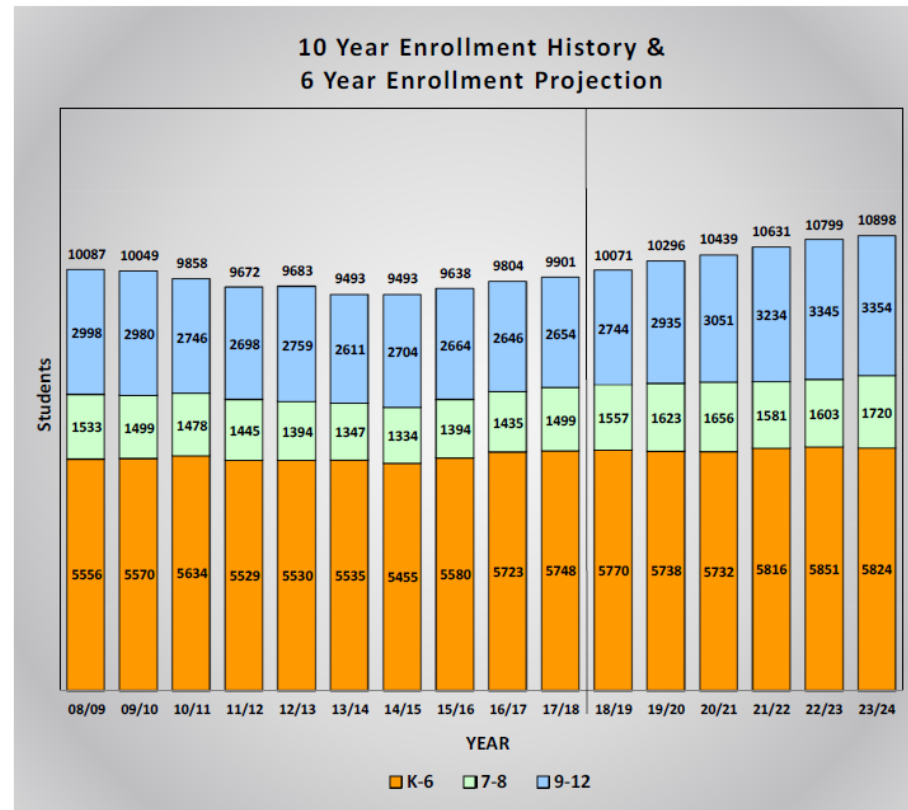
- ❑ 9,817 PK-12 students
- ❑ 1,252 employees
- ❑ \$130M annual budget
- ❑ 1.2M annual bus miles
 - ✓ 85 buses, 49 routes
- ❑ 2.3M meals served
- ❑ 1.1M ft² buildings
- ❑ 250 acres of grounds and fields

- ❑ 23 school sites:
 - ✓ 2 traditional high schools
 - ✓ 3 Intermediate schools
 - ✓ 13 elementary
 - ✓ 1 charter (7-12)
 - ✓ Average age: 72.5 years
 - Edgewater: 2009
 - Linda: 1855
 - Covillaud: 1858

Growing Enrollment

- ❑ Many sites already at capacity
- ❑ Additional classrooms have been added, but have outgrown:
 - ✓ Cafeterias
 - ✓ Gymnasiums
 - ✓ Libraries
- ❑ New environment:
 - ✓ Increased security
 - ✓ Bandwidth
 - ✓ Access

10 Year Enrollment History and 6 Year Enrollment Projections



This chart provides a summary of the last ten (10) years of historic enrollment and projected enrollment for the next six (6) years. The color orange represents the historic and projected enrollment for the elementary school grades K-6. The color green represents the historic and projected enrollment for the intermediate school grades 7-8. The color blue represents the historic and projected enrollment for the high school grades 9-12. The entire District enrollment is shown at the top of each bar.

Facility needs









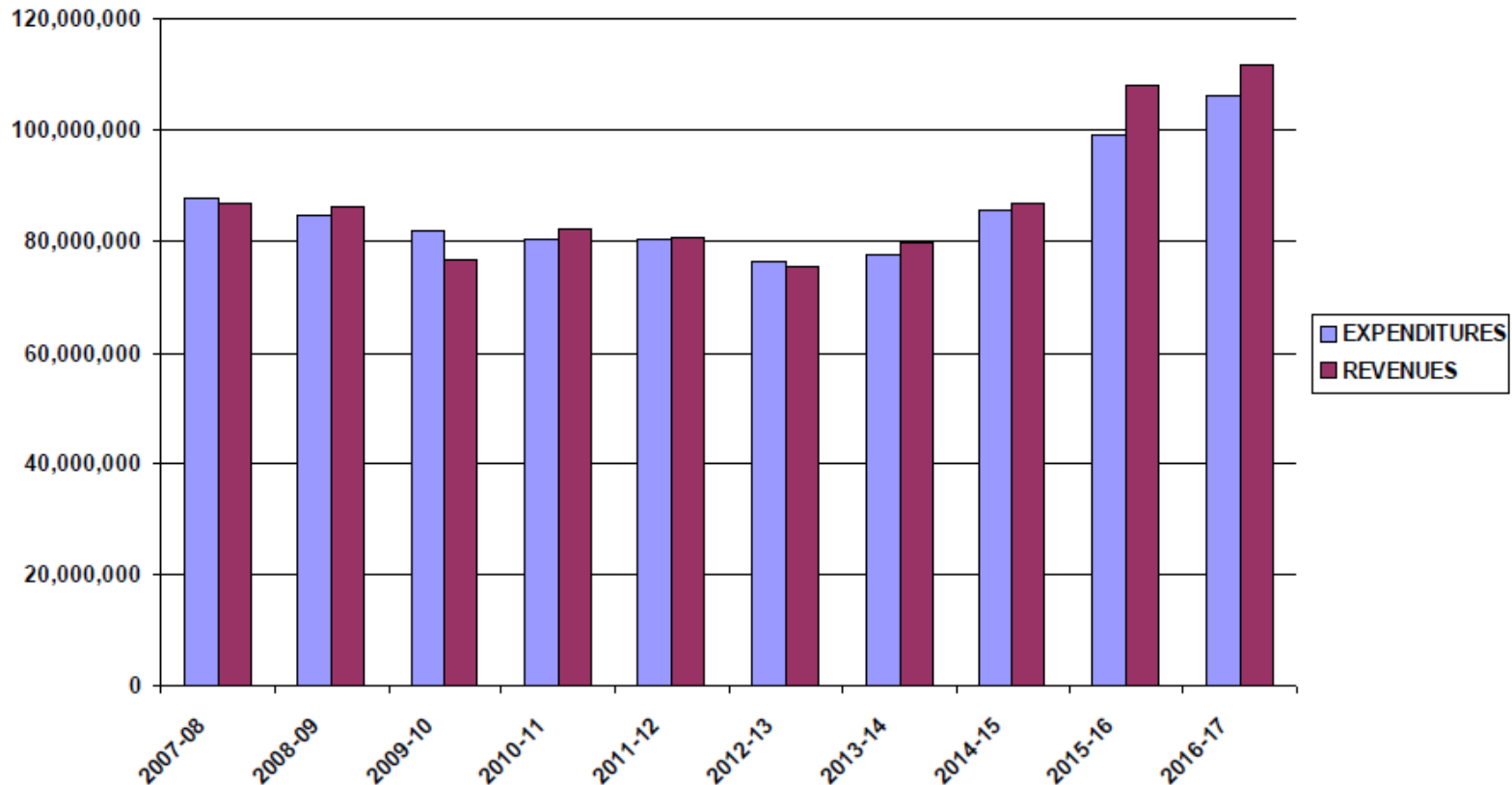




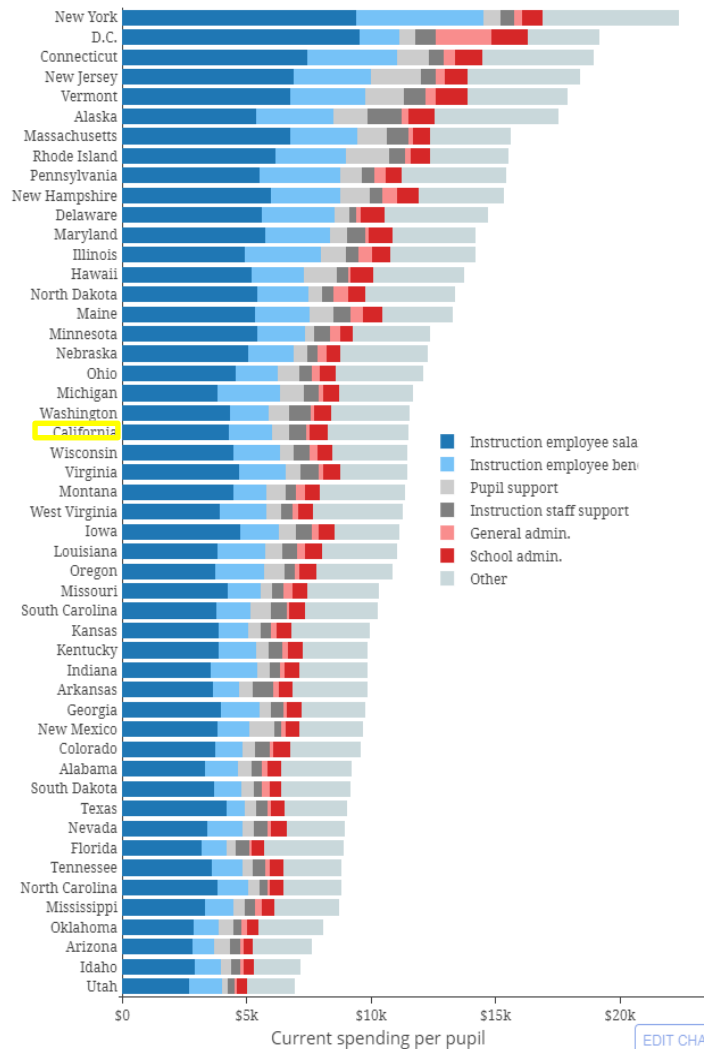


Years of limited funding

Marysville Joint Unified
Revenues vs. Expenditures by Fiscal Year
2007-08 to 2016-17, General Fund



California School Funding



California ranked 49th in 2012

Average of top 10 states: \$17,725

California: \$11,495

MJUSD: \$12,336

If MJUSD was at average of top 10, we'd have \$52.9M more each year

School Bond Funding

☐ Proposition 13 (June, 1978)

- ✓ Reduced property tax rates from just under 3% (average) to a maximum of 1% of 1976 value
- ✓ Limited reassessment to 2% annually unless sold
- ✓ Required any subsequent taxes to have 2/3 approval

☐ Proposition 39 (2000)

- ✓ Decreased requirement to 55%
- ✓ Added oversight requirements

Local Bond Approval

- ❑ School bonds generally successful even with 55% requirement
- ❑ 207 of 224 school bonds (\$28.6 billion) passed in 2016
 - ✓ Prop 51 provided matching funds
- ❑ 2 of 6 passed in 2017

Approval rates of CA school bond measures, 2008-2017		
Year	% Approved	% Defeated
2017	33.33%	66.67%
2016	92%	8%
2015	90%	10%
2014	81.53%	18.47%
2013	77.78%	22.22%
2012	80.71%	19.29%
2011	70%	30%
2010	73.5%	26.5%
2009	50%	50%
2008	85.9%	14.1%

Student Achievement and Facilities

“Researchers have repeatedly found a difference of between 5-17 percentile points difference between achievement of students in poor buildings and those students in standard buildings, when the socioeconomic status of students is controlled.”

- Earthman, Glen I. (2002). School Facility Conditions and Student Academic Achievement . Los Angeles, CA: UCLA’s Institute for Democracy, Education, & Access

Bonds & Property Values

“We find that passage of a bond measure causes house prices in a district to rise by about 6%. This effect appears gradually over the two or three years following the election and persists for at least a decade. Our preferred estimates indicate that marginal homebuyers are willing to pay, via higher purchase prices and expected future property taxes, \$1.50 or more for an additional dollar of school facility spending, and even our most conservative estimates indicate a willingness to pay (WTP) of \$1.13.”

Source: Quarterly Journal of Economics 125(1):215-261 · January 2010

MJUSD Process

- ❑ Developed Facility Master Plan
 - ✓ Reflects demographics, capacity, identified needs
- ❑ Conducted polling to determine community support: 62.2% responded positively (“definitely” or “probably” yes)
- ❑ Site visits at every school to generate input and validate needs
- ❑ July 24th, 2018 - MJUSD Board of Trustees approved the resolution to place on November ballot

November 2018 Ballot

“To repair/improve aging local schools with funding that cannot be taken by the State, replace leaking roofs, outdated heating, air conditioning, electrical/plumbing; remove asbestos/dry rot; upgrade outdated classrooms, bathrooms, science labs/technology, athletic facilities, libraries, performing arts buildings, and multipurpose rooms; improve safety/security systems; acquire, construct, modernize and equip facilities, shall Marysville Joint Unified School District measure be adopted to issue \$74,000,000 in bonds at legal rates, requiring audits/oversight, no money for administrators?”

“The best estimate of the average tax rate that would be required to be levied to fund this Bond issue during the life of the Bonds, based on estimated assessed valuations available at the time of filing of this statement, is 5.634¢ per \$100 (\$56.34 per \$100,000) of assessed valuation.”

Initial Project List

Multiple Sites	Carpeting / flooring
Multiple Sites	HVAC
Multiple Sites	Roof / ceiling / windows /wall / paint
Multiple Sites	Plumbing repair
Multiple Sites	Security improvements: gates / fences / lock-down
Multiple Sites	Playground and field repairs
Multiple Sites	Classroom improvements / repairs
ARBOGA	Replace portables
BROWNS VALLEY	MPR
CEDAR LANE	New MPR
COMMUNITY DAY	Additional Classroom
COMMUNITY DAY	Camera System
CORDUA	Cover for outdoor eating area
CORDUA	Automated irrigation system
CORDUA	Library furniture
CORDUA	LED Marquee
COVILLAUD	Replace portables with 2-story building
COVILLAUD	NEW MPR
COVILLAUD	Shade Structure
COVILLAUD	Access gate at West End
COVILLAUD	Sprinklers/Primary Playground
COVILLAUD	Asphalt
COVILLAUD	Exterior Lighting

EDGEWATER	Additional Classrooms
EDGEWATER	Primary Playground Equipment
EDGEWATER	Grass for playground
EDGEWATER	Lockdown Admin
ELLA	Modernize Kitchen
FOOTHILL	Modernize / Install permanent classroom walls
FOOTHILL	Bathroom
FOOTHILL	Install windows / Doors
JOHNSON PARK	New MPR
JOHNSON PARK	Modernize office
JOHNSON PARK	Moderize Bathrooms
KYNOCH	New classroom building
LINDA	New Playground
LINDHURST HIGH	Additional classrooms
LINDHURST HIGH	Modernize C building w/ walls and doors
LINDHURST HIGH	RENOVATE PORTABLES
LINDHURST HIGH	MODERNIZE LOCKER ROOMS
LINDHURST HIGH	WATER IMPROVEMENTS
LINDHURST HIGH	PARKING LOT FLOW/SURFACE
MARYSVILLE HIGH	Library Modernization
MARYSVILLE HIGH	Track/Field Renovation/Replacement
MARYSVILLE HIGH	Basketball Bleacher Replacement
MARYSVILLE HIGH	Replace Old Intercom System Clocks/Bells
MARYSVILLE HIGH	Boys Locker Room Locker Replacement

Initial Project List

MCAA	Facility for Performing Arts classes
MCKENNY	Replace Intercoms/Bells/Clocks
OLIVEHURST	Drainage on Playground
OLIVEHURST	Install Interior Doors for egress
PRESCHOOL	Replace small portables
SOUTH LHS	Athletic Facilities (Grass/Full BB Court)
SOUTH LHS	Storage
YUBA FEATHER	Playground
YUBA FEATHER	Landscape Northern playground
YUBA GARDENS	Permanent building
YUBA GARDENS	Replace/Repair Portables
YUBA GARDENS	New Administration Building
YUBA GARDENS	Parking/ Ditches

- ✓ Most projects eligible for State matching funds
- ✓ All projects will require Board approval
- ✓ Citizens Bond Oversight Committee required; volunteers desired!

Impact on Property Tax

- ❑ Estimated Tax rate: \$56.34 / \$100,000 of ASSESSED value
- ❑ Marysville Average Assessed Value: \$159,497
- ❑ Bond tax: \$89.86 annually (\$7.50/mo)

Other bonds

KPBS™ Listen Watch Schedules Programs Give
News Arts & Culture Living Family Events

Facebook Twitter Email

San Diego Unified Pursuing \$3.5 Billion Bond Measure For November

Tuesday, June 26, 2018
By Megan Burks

SDUSD:

✓ \$26.9K / student

GVUSD

✓ \$11.1K / student

MJUSD

✓ \$7.4K / student

LOCAL BALLOT MEASURES

THE BASICS OF DIRECT DEMOCRACY

TEXT OF MEASURE PATH TO THE BALLOT SEE ALSO MORE

A school bond issue was on the ballot for Grass Valley School District voters in Nevada County, California, on June 5, 2018. It was **approved**.

A yes vote was a vote in favor of authorizing the Grass Valley School District to issue \$18,800,000 in bonds at a tax rate of \$0.024 per \$100 of assessed property value to fund repairs and improvements at elementary and middle schools.

A no vote was a vote against authorizing the Grass Valley School District to issue \$18,800,000 in bonds to fund repairs and improvements at elementary and middle schools.

A 55 percent supermajority vote was required for the approval of this measure.

Election results

Grass Valley Elementary School District Measure D		
Result	Votes	Percentage
Yes	5,747	63.25%
No	3,339	36.75%

Precincts reporting: 100%
Source

Measure D: Grass Valley School District Elementary and Middle School Bonds

The basics

Election date: June 5, 2018
Status: Approved
Majority required: 55 percent
Topic: Local school bonds

Summary

- ❑ Bona fide need exists
- ❑ Large impact on home values and student performance
- ❑ Oversight includes a separate committee of citizens
- ❑ Project list documents intentions
- ❑ Provides access to state matching funds